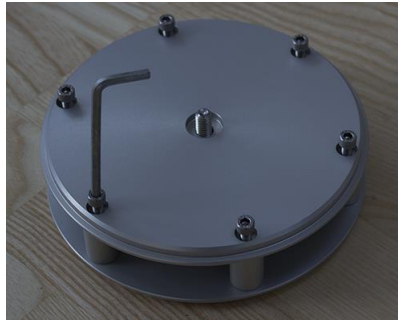
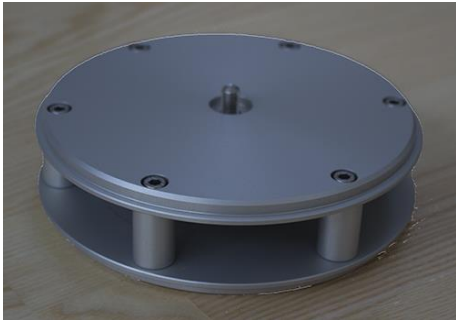


Appendix B

Mounting the Pier adapter on the Mount Head

1. Remove bottom adapter base plate
Place the adapter on a flat table with the magnetic spring loaded threaded rod upwards. Unscrew the 6 screws and remove the base plate and the star shaped handle plate.

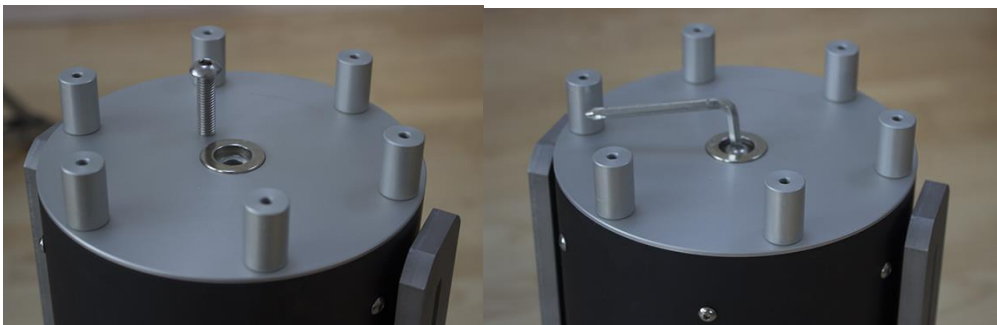


2. Mount Pier Adapter top baseplate on TTS-160 Mounting Head
The altitude clutches on the Mounting Head is locked firmly. Place the Mounting Head on a stable table upside down on the Telescope Saddle plate.



WARNING: Secure Altitude clutches before placing mount head upside down. Be careful not to knock over the head.

Place the Pier adapter top plate on the mount head and fix with screw (Metric $\varnothing 8\text{mm}$ x 20mm)



Tighten firmly with enclosed Allan Key - do not over-tighten.

3. Mount Pier Adapter lower baseplate

Mount the lower base plate of the Pier adapter with the 6 screws. Remember to insert the star shaped handle plate as shown



Tighten the screws with the enclosed Allan key.

The mount head with the Pier adapter is now ready for use on the Pier.



NOTICE:
The Pier Adapter stays on the Mounting Head. It will fit in the transport bag.